

# *Nunc dimittis*

Dana T. Marsh

1983

for choir of men's voices  
(AATB)

Text: Luke 2: 29-32

#### PERFORMANCE NOTES

This setting of the canticle *Nunc Dimittis* was written specifically for the Office of Compline—thus the inclusion of the antiphon *Salva nos, Domine vigilantes*. On occasions where the antiphon would be inappropriate, it may be omitted.

The *Gloria Patri* of this setting should have a buoyant swing to it. The tempo at the beginning of the *Nunc Dimittis* should be set accordingly.

**Dana Marsh**  
May 1989

for Dr. Peter R. Hallock  
and the Compline Choir of St. Mark's Cathedral, Seattle

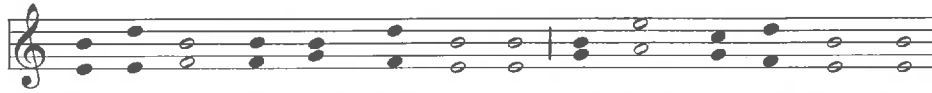
# NUNC DIMITTIS

for men's voices

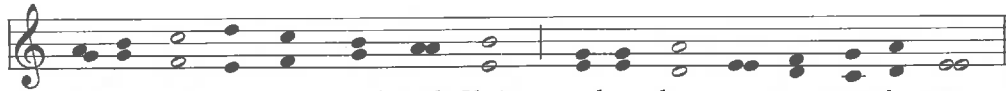
Text: Luke 2: 29-32  
The Book of Common Prayer, 1928

music by DANA MARSH  
Seattle, 1983

## COMPLINE ANTIPHON



Pre-serve us, O Lord, while wak - ing, and guard us while sleep - ing,



that a - wake we may watch with Christ and a - sleep we may rest in peace.

*Slowly and deliberately*

ALTO I *p* Lord, now let - test thou thy ser - vant de - part in

ALTO II *p* Lord, now let - test thou thy ser - vant de - part in

TENOR *p* Lord, now let - test thou thy ser - vant de - part in

BASS *p* Lord, now let - test thou thy ser - vant de - part in

*mp* peace, ac - cord - ing to thy word; For mine eyes have seen thy sal -

*mp* peace, ac - cord - ing to thy word; For mine eyes have seen thy sal -

*mp* peace, ac - cord - ing to thy word; For mine eyes have seen thy sal -

*mp* peace, ac - cord - ing to thy word; For mine eyes have seen thy sal -

va - tion, which thou hast pre - pared be - fore the face of all peo -

va - tion, which thou hast pre - pared be - fore the face of all peo -

<sup>s</sup> va - tion, which thou hast pre - pared be - fore the face of all peo -

va - tion, which thou hast pre - pared be - fore the face of all peo -

*f* ple, To be a light to *mf* light - en the Gen - tiles,

*f* ple, To be a light to *mf* light - en the Gen - tiles,

<sup>s</sup> *f* ple, To be a light to *mf* light - en the Gen - tiles,

*f* ple, To be a light to *mf* light - en the Gen - tiles,

*p* and to be the glo - ry of thy peo - ple Is - ra - el.

*p* and to be the glo - ry of thy peo - ple Is - ra - el.

<sup>s</sup> *p* and to be the glo - ry of thy peo - ple Is - ra - el.

*p* and to be the glo - ry of thy peo - ple Is - ra - el.